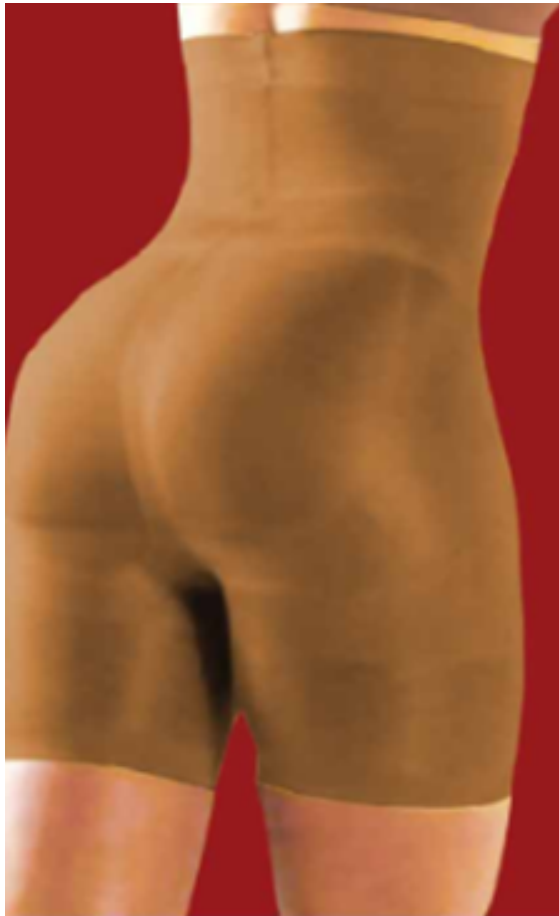


SIMPLE
& RELIABLE

WAMA Body Shapers

WAMA[®]
moving ahead...



and passionately moving ahead in many more countries...

www.wamaworld.com

to know more on our
products & services,
scan the code for
instant information



wamaworld.com

SIMPLE
& RELIABLE

WAMA Body Shapers



Description

Material : Polyamide+spandex,

- Flatten the Tummy
- Helps your thighs to appear Slimmer
- Fits Perfect from below the bust line to above the knee line.
- Free breathing & easy to wear micro fiber fabric.
- Size available :- XL / XXL

Model NO YD-V150101



and passionately moving ahead in many more countries...

www.wamaworld.com

to know more on our
products & services,
scan the code for
instant information



wamaworld.com

SIMPLE
& RELIABLE

WAMA ultra body slim suit for Women

WAMA[®]
moving ahead...



to know more on our
products & services,
scan the code for
instant information



and passionately moving ahead in many more countries...

www.wamaworld.com



[wamaworld.com](http://www.wamaworld.com)

SIMPLE
& RELIABLE

WAMA Body Shapers



Description

Material : Polyamide+spandex,

- Soft comfort nylon and spandex
- Breathable Fabric
- Easy to put and take off
- Perfect to wear with any fashionable clothes
- No hooks and eye and additional bone
- Color skin color
- Size available :- L - XL (34 to 40inch)
XXL – XXXL (42 -46 inch)

Model NO YD-V150103



and passionately moving ahead in many more countries...

www.wamaworld.com

to know more on our
products & services,
scan the code for
instant information

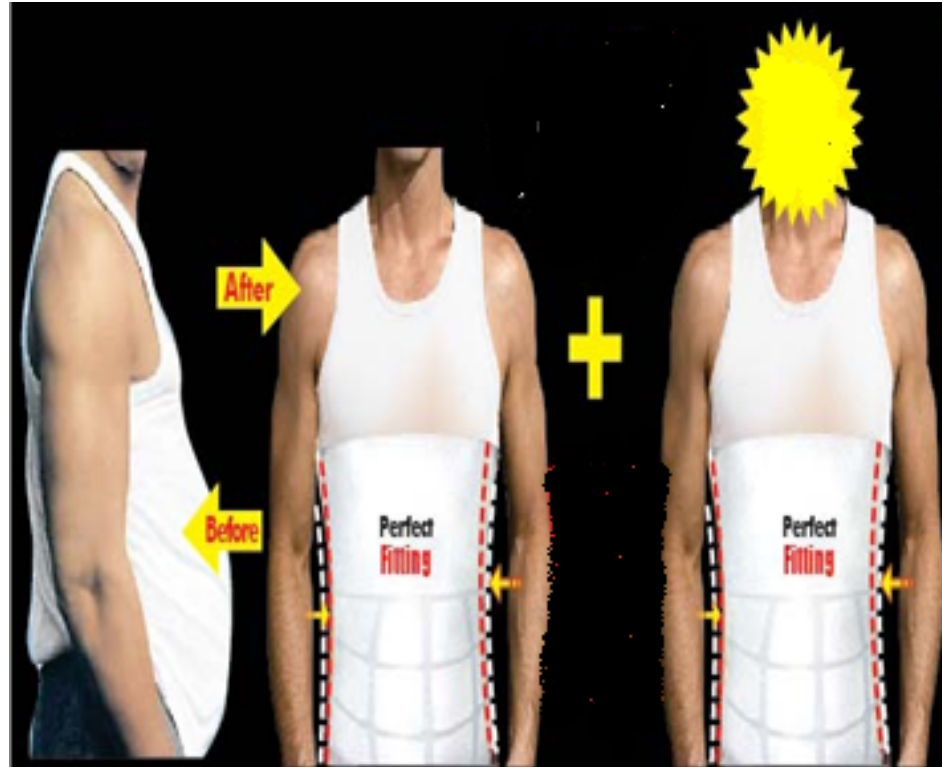


www.wamaworld.com

SIMPLE
& RELIABLE

WAMA Silm'N lift

WAMA[®]
moving ahead...



to know more on our
products & services,
scan the code for
instant information



and passionately moving ahead in many more countries...

www.wamaworld.com



wamaworld.com

SIMPLE
& RELIABLE

WAMA Silm'N lift

 **WAMA**[®]
moving ahead...

Description

Material : Polyamide+spandex,

- Soft Fabric
- Stretches and Retracts
- Sleeveless Design for free movement or exercise.
- Comfortable to wear everyday.
- Keep you Slim and thin
- Size available :- L - XL (34 to 40inch)
XXL – XXXL (42 -46 inch)

Model NO **SL-B1501**



and passionately moving ahead in many more countries...

www.wamaworld.com

to know more on our
products & services,
scan the code for
instant information



[wamaworld.com](http://www.wamaworld.com)

SIMPLE
& RELIABLE

WAMA Mens Slim Wear

WAMA[®]
moving ahead...



and passionately moving ahead in many more countries...

www.wamaworld.com

to know more on our
products & services,
scan the code for
instant information



wamaworld.com

SIMPLE
& RELIABLE

WAMA Mens Slim Wear

WAMA[®]
moving ahead...

Description

Material : Polyamide+spandex,

- Soft and comfortable Fabric
- Helps your tummy to appear flat
- Stretches and Retracts to pull you into shape
- Free breathing & easy to wear everyday.
- Keep you Slim and thin
- Size available :- L - XL (34 to 40inch)
XXL – XXXL (42 -46 inch)

Model NO **YD-V150104**



and passionately moving ahead in many more countries...

www.wamaworld.com

to know more on our
products & services,
scan the code for
instant information



wamaworld.com